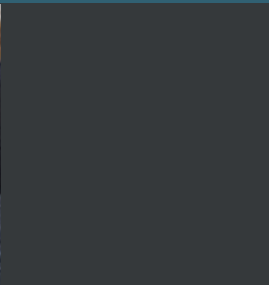
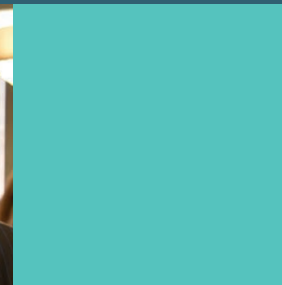


The Mackrell International Legal 'Family'

Why it might be perfect for your law firm



At Mackrell International (MI) we are all committed to finding the right firms and the right lawyers to join the MI 'family' - but that's as much about us being right for you as you being right for us.

There are certain things we take as a given and we trust will have you nodding in agreement - we are a closely-aligned and strongly-connected network of high-calibre, full-service, independent law firms. We have an international outlook, aspirations and links and we have broad and deep local expertise.

That allows us to look after each other's clients the way we look after our own.

As well as doing good business with one another, we share ideas and insight and support one another on an individual and a firm level, personally as well as professionally.



Does that
sound like
you and
your firm?

If you value the potential of being connected powerfully across 65 countries and to more than 100 highly-responsive law firms (with around 4,500 lawyers worldwide) - then MI might be right for you.

It's like being part of a major, international law firm, but friendlier, more agile and better value for your clients.



Why law firms join our network



Firms join us for many reasons - and very often a blend of them:

- to service your clients better and seamlessly
- to increase inbound business
- to access new markets and sectors
- to use the strength of the network to win new business and compete against larger law firms
- to have a trusted peer-to-peer network for insight and support on business matters
- to support the development of younger, up-and-coming lawyers
- to make long-lasting friendships
- to explore cultures and countries



What makes MI different?



There are, of course, many legal networks to choose from - but we believe you'd be hard-pressed to find one where the members are so strongly and closely connected, personally and professionally - where we look after each other (and our clients) like family.

You would also struggle to find a network that works harder to innovate, create opportunities and connect members in all sorts of different ways - or looks to bring learning and insight from outside the legal world to add value. One that really listens to the needs (and changing needs) of members.

Whether that's through our blossoming Next Generation groups (both regional and global), our increasingly dynamic Practice Groups (producing videos, interviews, webinars and rich content), our global Managing Partner Forums, our collaborations with MGI Worldwide accountants or our vibrant Women's Group, we have something for you.

Ultimately, we want you to look around the network and think and feel, 'these are my people'.



So, what do we look for in our members?



We want you to feel you will thrive in the network - and also contribute actively. So much of what you get out comes from what you put in - and the opportunities are there for you and for your colleagues.

In order to keep connections strong, we also expect you to take part in person at our Annual General Meeting and, where possible, at our annual Regional Meeting.

We do invest a great deal of time and effort in finding those lawyers who share the same fundamental values, responsiveness and client commitment so that all clients receive the best service. We do market the network, but we still believe word of mouth from consistently doing an exceptional job is the best type of marketing.

Have we
got you
interested?



The best way to find out whether Mackrell International is right for you and your firm is to have an exploratory conversation with us. Talk openly with the Managing Director and ask any questions you'd like. You're also very welcome to speak to members of our Board (International Committee) or individual members where currently you do business or aspire to do business.

Start by getting in touch:
mackrell.hq@mackrell.net

And take a look at
www.mackrell.net
for further information

MACKRELL
INTERNATIONAL

